

Drum Set

Never Give Up

14 Every Word

Lyrics by Thomas K. Hunter
Book by Thomas K. Hunter

Act II Scene 4

Music Composed by Thomas K. Hunter
and Steve Lehmann
Arranged and Orchestrated by John Herberman

$\text{♩} = 140$

The score is written on a single staff with a drum set icon. It is in 2/2 time with a tempo of 140. The piece consists of 30 measures. Measure 1 is a whole rest. Measure 2 is a whole rest. Measure 3 is a triplet of eighth notes (G4, A4, B4) with a circled '3' above it. Measures 4-6 are eighth-note patterns: G4, A4, B4, C5, D5, E5, F5, G5. Measure 7 is a quarter note G4. Measures 8-10 are eighth-note patterns: G4, A4, B4, C5, D5, E5, F5, G5. Measure 11 is a quarter note G4. Measures 12-14 are eighth-note patterns: G4, A4, B4, C5, D5, E5, F5, G5. Measure 15 is a quarter note G4. Measures 16-18 are eighth-note patterns: G4, A4, B4, C5, D5, E5, F5, G5. Measure 19 is a circled '19'. Measures 20-22 are eighth-note patterns: G4, A4, B4, C5, D5, E5, F5, G5. Measure 23 is a quarter note G4. Measures 24-26 are eighth-note patterns: G4, A4, B4, C5, D5, E5, F5, G5. Measure 27 is a quarter note G4. Measures 28-30 are eighth-note patterns: G4, A4, B4, C5, D5, E5, F5, G5. There are 'fill' markings in measures 3 and 10.

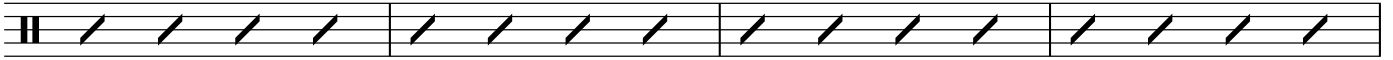
Drum Set

31

32

33

34

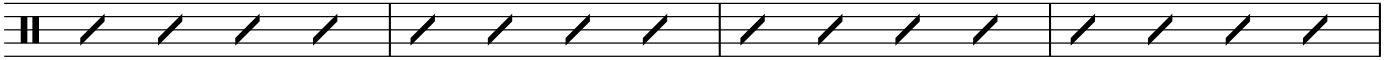


35

36

37

38

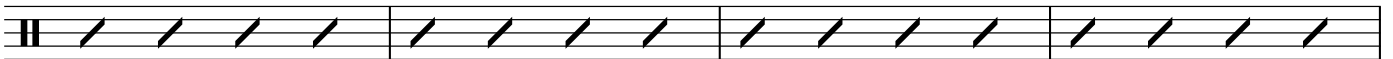


39

40

41

42

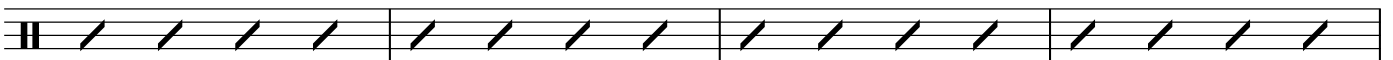


43

44

45

46



47

48

49

50

on cue



51

52

53

54

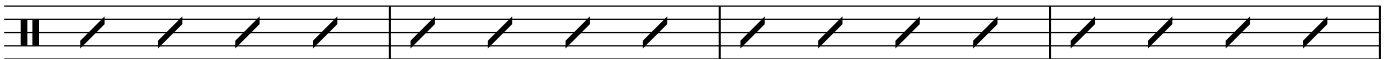


55

56

57

58



59

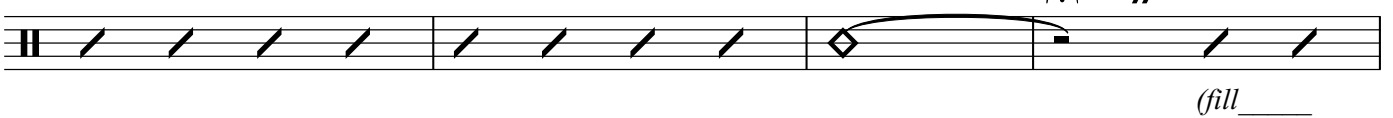
60

61

slower - conducted

a tempo

on cue



(fill _____)

63

64

65

