

Voice

Never Give Up

07 Paths to Tread

Lyrics by Thomas K. Hunter
Book by Thomas K. Hunter

Act 1 Scene 7

Music Composed by Thomas K. Hunter
and Steve Lehmann
Arranged and Orchestrated by John Herberman

CUE: segue from "Avoiding Defeat"

$\text{♩} = 94$ **4** **5** CHURCHILL *sings*

1-4 From my brow with sweat profuse, comes a plan of

11 might - y use. 12 13 14 15 Be - got by this one

16 voice, 17 18 19 now turn the tide. A brand new

25 Slower **4** **2** CUE: CH; "And so we go!"

20 choice 21-24 25-26 27 28

29

30 31 Fol-low me and you will see that far bey-ond nor-mal - i - ty Brill-iant bold a - bil - i - ty will

34

32 33 34 35 breed de-feat of Ger-man-y Turn your mind to this new choice and let me hear it in your voice.

CUE: GREY; "Must all men die in France?"

36 37 38 39 Find your spine for those we owe now throw a-way the stat-us quo!

Voice

40



On your feet and eyes a - lert for on this path we now di-vert. Do not fail and do not whine to



guar-an-tee a vic-t'ry sign. Lord a-bove you're each an-tique. Why do you nurse this lo-sing streak?



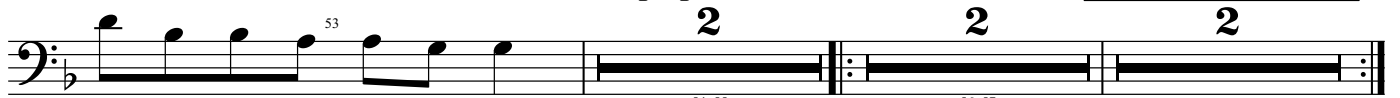
Chins too weak for that we seek now brace your selves and hear me speak

50 *a tempo*

Bet-ter men than we are they with more to lose and more to pray. Dump the course that runs blood-red and

Tempo primo

CUE: ALL; " To Turkey
and vict'ry!"



choose a path we've yet to tread

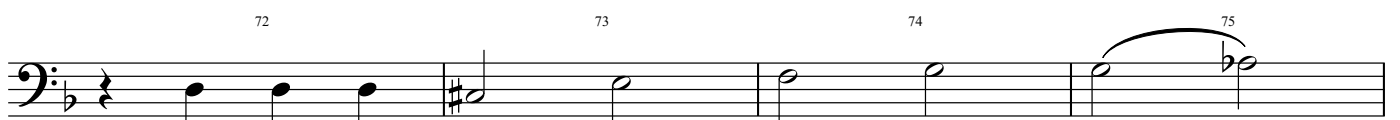
60



So we set to work my friends in this job that



nev - er ends. Good luck to all God's speed,



and from this hell they will be freed!_____

CH, et al walk off stage. FISHER breaks away...

80

4

12

76-79 80-91

(Fisher monologue)

CUE: FISHER; "...and follow they shall!"

93 Slower
on cue

4

93-96