

Voice

Never Give Up

# 06 Avoiding Defeat

Lyrics by Thomas K. Hunter  
Book by Thomas K. Hunter

Act 1 Scene 7

Music Composed by Thomas K. Hunter  
and Steve Lehmann  
Arranged and Orchestrated by John Herberman

CUE: On lights up, after a beat

**5** ASQUITH:

ASQ (speaks); " Gentlemen! This meeting...in session."

$\text{♩} = 100$

**3**



We have come to meet to a-void de-feat your at



ten-tion here\_\_ must be com-plete\_\_ A lost ship at sea a nav-al de-feat\_\_



Ger-mans on the coast\_\_ and they won't re - treat.

**15**

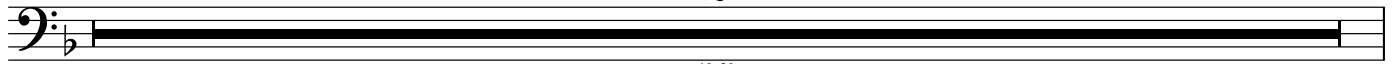
*slower*



A re-ver-sal soon this coun-cil must lead\_\_ re-com-mend-a - tions we must now pro-ceed.

**19** Tempo primo

**2**



KITCH:



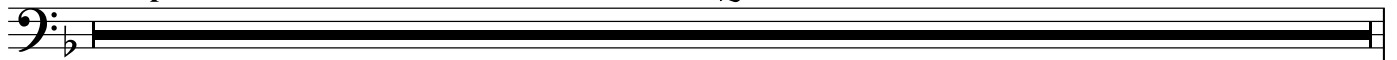
Con-ject-ure and lies the news-pa-pers write. But I know the truth to car-ry the fight.



For-ti-fy the line\_\_ fo-cus all we've got\_\_ de fence is the key\_\_ and France is the spot.

**a tempo**

**2**



29-30

## Voice

**31** LLOYD GEORGE:

Fight-ing in the trench is that what you say \_\_\_\_\_ dis -

rit...

slower

**35** Faster

ease at the start and death in the fray. Gen-tle-men gen-tle-men Au-stri-a won't fight, so

37

38

FISHER:

39

Au-stri - a is right as a way to solve our plight. Pop - py-cock pop - py-cock

poco rit...

40

41

42

Au-stri - a you say? Now Au-stri - a old man is a death en-sur-ing fray.

**43** a tempo

LLOYD GEORGE:

Pop - py-cock pop - py-cock pop - py-cock you say? Now pop - py-cock is talk of a

rit...

**48** slower

FISHER: (with venom)

50

51

crot-chet-y cli-che. Well this old cli-che has a lot to say.

52

53

54

55

Re-com-mend-a-tions will now come your way \_\_\_\_\_ En-land is a ship,

56

57

58

59

60

strong-est on the sea. Think a-bout the two, the na-vy is the key.

**61**

Pop-py-cock or not, crot-chet-y you claim? Na-val pow-er is how we'll win this game.

**66**

Might-y in de-fence Swift up-on the sea Sure of all we do it's el-e-ment-a-ry!

**71** *l'istesso tempo*  
ASQUITH:

Gen-tle-men gen-tle-men in France we will be. The Ad-miral-ty's first lord I as -

*rit...*

sume you a - gree?\_\_\_\_\_

"Paths t